



WAIKIKI IMPROVEMENT ASSOCIATION

Wikiwiki Wire

E-newsletter keeping you up to date on Waikiki news, features, trends and more!

Volume XIII, No. 21

November 1-14, 2012

Aqua Hotels & Resorts introduces new Aqua Skyline at Island Colony

Former Island Colony Hotel emerges with new name and sophistication following renovation

Aqua Hotels & Resorts' Island Colony Hotel will emerge a stylish, modern Waikiki property accompanied by a new name following a \$6 million renovation and upgrade. The new Aqua Skyline at Island Colony will welcome visitors with a significantly upgraded guest experience that includes completely refurbished guest rooms and fashionable common areas. The hotel is located in the heart of Waikiki at 445 Seaside Avenue just two blocks to the beach and near the popular International Marketplace.



“Aqua continues its revitalization of Waikiki with the debut of Aqua Skyline at Island Colony,” said Elizabeth Churchill, senior vice president sales & marketing. “Given the dramatic difference in overall guest experience, we felt it appropriate to rebrand this property with a name that more closely reflects the new look and feel of the hotel. What hasn’t changed is the tremendous value Aqua provides in a Hawaii vacation and the warm and friendly spirit of the staff.”

Continued on next page

Inside this issue:

- | | |
|--|---|
| 1-2 Aqua Introduces New Aqua Skyline at Island Colony | 9 Matthew Pickett named GM of Aqua Lotus Honolulu |
| 3 Hawaiian Launches Nonstop Service to Sapporo | 10 Hawaiian Ranks Highest for Services to Hawai'i in Business Leisure Travel Consumer Awards of Conde Nast Traveler |
| 4 Na Ho'ola Spa Kama'aina Membership | |
| 4 Celebrate Thanksgiving with an Unforgettable Feast at Hyatt | * Outrigger – Weekly Events & Promotions, November 4 – 10 |
| 5 Hawaiian Expanding Brisbane Service for Spring Travel | * DFS November Event Calendar |
| 6 Waikiki Parc Hotel Celebrates its 25th Anniversary | * Royal Hawaiian Center November Calendar |
| 7 First-Ever Mid-Pacific Conference on Birth and Primal Health Research to Draw World-Renowned Medical Experts from Oct. 26-28 | * November 18 Nā Mele No Nā Pua |
| 7 Hakone Restaurant's Sushi Buffet | * Outrigger – Weekly Events & Promotions, November 11 – 17 |
| 8 Hawaiian to Increase Capacity to Manila | * The Best Holiday Party Ever |
| 9 Royal Hawaiian Center Welcomes Performers for the Holidays | |

... and MORE

Continued from front page

Aqua Skyline at Island Colony's new rooms will debut in November and boast a contemporary design in a palate of green and silver. Wenge-colored cabinets and furniture, granite counter tops, flat screen LCD TVs, new tile in bathrooms and kitchenettes, and upgraded bedding and linens will welcome guests with style and comfort.

Rooms offer spacious balconies with commanding views of the Pacific Ocean and majestic Koolau Mountains. Studio and suites include a kitchenette with microwave, stove-top, coffeemaker, toaster and mini-refrigerator. Other hotel amenities include a renovated pool, jet spa, sundeck, barbecue area, as well as, convenience store, coin-operated laundry, WiFi Internet access and car rental services.

Additional renovations to the common areas will follow the rooms and have an expected completion date of February 2013. Visitors will enjoy an upgraded arrival experience with new landscaping, hardscaping, front desk, and row of plantation-style lobby window door shutters. The pool area will boast new flagstone tile decking, a rebuilt Jacuzzi and newly retiled pool with orchid design. Stylish wooden trellises and new potted plants will provide privacy and create visual interest. New furniture will offer guests cozy seating and conversation areas. Other new additions to the hotel include barbecues, fitness center and retail shop on the lobby level. The hotel also has plans to open two dining venues for added guest convenience.

"We are excited to keep pace with Waikiki's renewed popularity by evolving into a boutique hotel experience that is on par with the expectation of today's traveler," said Will Tanaka, President of American Pacific Hotels, owner of the hotel. "Our stylish and contemporary design, large rooms with lanais and kitchenettes, and enhanced amenities will appeal to a broad range of visitors including families, girlfriends, social groups, couples and corporate travelers."

Located in the tallest building in Waikiki, Aqua Skyline at Island Colony is 110 rooms located within the 740-room property. It is conveniently located just two blocks to the beach and steps to Waikiki's shopping, dining and nightlife. The hotel is open throughout the renovation with the majority of work taking place weekdays between 8 a.m. and 5 p.m.

Upcoming issues of Waikīkī Wiki Wiki Wire:

November 15

December 6 and 20

Waikīkī Wiki Wiki Wire - Newsletter Deadline

The WIA newsletter is published 2x per month—generally on the first and third Thursday.

Waikīkī-related news and information submitted by members for the Waikīkī Wiki Wiki Wire should be received no later than 4pm Wednesday for newsletters published and distributed on Thursday.

Information received after the deadline will be considered for inclusion in the following issue.

Photos which accompany stories are always welcome and, for best results, should be attached to the email as a separate jpeg - maximum 1 MB each image please.

Single page PDFs are also welcome but they should look like flyers and not press releases (without media contact information, dateline, city, etc.).

Your kokua is appreciated. *Mahalo.*

Hawaiian Launches Nonstop Service to Sapporo

Hawaiian Airlines today launched its inaugural flight from Honolulu to Sapporo, Japan, and restored nonstop service between the two cities that had been discontinued by other carriers nine years earlier.

Passengers of the inaugural flight enjoyed a festive island-style send-off at Honolulu International Airport before boarding, featuring Hawaiian music and hula, a traditional Hawaiian blessing, presentation of fresh flower lei, and a special performance honoring the Japanese culture.

Mark Dunkerley, Hawaiian's president and CEO, said, "We are delighted to be restoring the convenience of nonstop service to Hawai'i for travelers in Hokkaido and look forward to bringing increasing numbers of visitors from the region to our island home. At the same time, we know that many of our customers in Hawai'i and North America with an affinity for Japan will take the opportunity of this new service to experience the unique sites and cultural attractions of northern Japan."



The capital city of the island of Hokkaido, Japan's second-largest and northernmost island, Sapporo is Japan's fourth-largest city with a population of 1.9 million. Sapporo is renowned for its ski resorts – the city hosted the 1972 Winter Olympics – and the world-famous Sapporo Snow Festival, which annually attracts millions of visitors each February to see its spectacular snow and ice sculptures.

Hawaiian's Honolulu-Sapporo service is adding 41,000 new air seats to the market annually and the benefit to Hawai'i's visitor industry will be significant, according to the Hawai'i Tourism Authority.

"Today's launch of Hawaiian Airlines' new Sapporo route is great news for Hawai'i's tourism economy and will generate an estimated \$61 million in visitor spending and \$6.7 million in state tax revenue" said Mike McCartney, president and CEO of the Hawai'i Tourism Authority. "The flight will also provide residents of Hokkaido with its only direct access to Hawai'i. We remain committed to working with Hawaiian Airlines to ensure the success of this flight and providing visitors greater accessibility to our state."

Hawaiian's Flight HA 441 departs Honolulu International Airport on Tuesday, Thursday, and Saturday at 2:45 p.m., crosses the international dateline, and arrives at Sapporo's New Chitose Airport at 7:00 p.m. the following day.

The return flight HA 442 departs Sapporo on Wednesday, Friday, and Sunday at 9:30 p.m., crosses the international dateline, and arrives in Honolulu at 9:55 a.m. the same day.

Hawaiian will operate its Honolulu-Sapporo flights offering the comfort and roominess of its wide-body, twin-aisle Boeing 767-300ER aircraft seating 264 passengers, with 18 in Business Class and 246 in the Main Cabin.

Travelers will enjoy a customized presentation of Hawaiian's signature inflight hospitality program, combining its celebration of the islands' culture, people, and Aloha Spirit with entertainment options and special onboard products designed for the Japanese traveler.

Sapporo is the fourth city in Japan that Hawaiian has introduced nonstop service in the past two years following Tokyo (November 2010), Osaka (July 2011), and Fukuoka (April 2012).

Tickets can be purchased online at www.HawaiianAirlines.com, by calling Hawaiian's reservations department toll-free in the U.S. at 1-800-367-5320, or through its Japanese-language website at www.HawaiianAirlines.co.jp or by calling its sales office in Japan at 03-5405-8761.

Na Ho'ola Spa Kama'aina Membership

Join the membership program and enjoy great benefits including free massages

Na Ho'ola Spa, located on the fifth floor of Hyatt Regency Waikiki Beach Resort and Spa at 2424 Kalakaua Avenue invites Kama'aina to join the new Spa Kama'aina Membership Program. Just in time for the holidays, this is the perfect gift for oneself or others. The \$120 registration fee includes a 50-minute Lomi Lomi massage, 15% off future spa visits, 10% off retail purchases, complimentary valet parking, and the 4th massage is free after the first three paid massages. Membership is available to all residents of Hawaii as well as military stationed in Hawaii. Registration lasts one year; the current offer expires January 31, 2013. Details are available by calling (808) 237-6330.



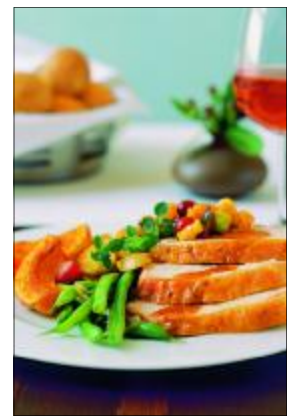
“We felt that by revising our membership offer to include the fourth massage free it really makes this the ideal membership program. This is a great opportunity for our Kama'aina from Oahu and neighbor islands to experience award-winning world class services and treatments at a reduced price; and for serious spa goers, it offers a delightful return on investment,” says Jerry Ferreira director of Na Ho'ola Spa.

Na Ho'ola Spa is located in the Hyatt Regency Waikiki Beach Resort & Spa overlooking Waikiki Beach, on the fifth and sixth floors between the Ewa and Diamond Head towers. It is a full-service spa that offers guests a place to rejuvenate the body, mind, and spirit. In addition to conventional treatments, the spa perpetuates health and wellness through the practice of Hawaiian culture and values. Additional information is available online at waikiki.hyatt.com.

Celebrate Thanksgiving with an Unforgettable Feast at Hyatt

Price: \$45 per person, \$15 for kids 6 to 12, free 5 and younger

Hyatt Regency Waikiki Beach Resort and Spa Executive Chef Sven Ullrich invites the public to celebrate Thanksgiving at the Hyatt in SHOR - located on the third floor, Diamond Head tower at 2424 Kalakaua Avenue on November 22 from 5 p.m. to 9:30 p.m. The menu includes an all-you-can-eat Turkey Action Station with slow roasted free range organic turkey and sourdough-pecan stuffing. Also available are a variety of sides as well as pumpkin pie with spiced Chantilly cream, pecan pie with all natural vanilla gelato, sugared cinnamon sticks, and spiced apple cider cocktail. Dinner is \$45 per person, \$15 per child aged 6 to 12 and free for children five and younger. Complimentary valet or self-parking. Reservations are available at (808) 237-6145.



“By serving carefully sourced foods like the free range organic turkey and products from local farms we are helping our community and our guests to thrive. Creating a delightful menu that everyone in the family will enjoy and be truly thankful for is what makes Thanksgiving such a wonderful time for us,” remarks Chef Ullrich.

Also included on the menu are green beans with caramelized sweet onion and pancetta; whisky and cane sugar glazed root vegetables; maple roasted chestnuts with fresh parsley butter; potato puree with sweet cream butter and Molokai sea salt; and, hamakua mushroom compote with local herbs. Thanksgiving dinner is from 5:00 p.m. to 9:30 p.m.; plate specials are available at SWIM poolside bar and lounge for \$29 per person from 11 a.m. to 11 p.m.

Hawaiian Expanding Brisbane Service for Spring Travel

18 Special Flights Added During March-May 2013

Travelers from Hawai'i and the U.S. mainland wanting to visit Australia's "Sunshine State" will have some extra schedule options in the spring of 2013, with Hawaiian Airlines' announcement today that 18 special flights have been added to its nonstop service schedule between Honolulu and Brisbane.

The special flights are in addition to the thrice-weekly service that Hawaiian is launching from Honolulu to Brisbane on November 27, and coincide with deliveries of additional new Airbus A330-200 aircraft to Hawaiian's fleet, which will free up existing Boeing 767-300 aircraft for the expanded service.

Of the 18 additional flights, 10 will operate next March, with four in April, and four in May. "We are delighted with the strong demand for our service from Australia, in particular from the Queensland market," said Peter Ingram, Hawaiian's executive vice president and chief commercial officer. "With additional aircraft capacity now becoming available between March and May, we have the added opportunity not only to increase the number of seats on the Brisbane route during this period, but also to explore some different schedule options for the future," Ingram said.

The 18 special flights will depart Honolulu in early afternoon, allowing travelers from Hawaiian's North America gateways in Seattle, San Francisco, Sacramento, Las Vegas, and Phoenix to begin their trip in the morning and make a seamless one-stop connection to Brisbane via Honolulu.

Complete schedule information for the special flights is available online at HawaiianAirlines.com. The 18 special flights are the newest initiative taken by Hawaiian to grow the Australia travel market. Hawaiian's impending launch of scheduled service between Honolulu and Brisbane will bring to 10 its number of weekly departures from Australia, with daily flights from Sydney using 294-seat A330 aircraft and three flights weekly from Brisbane using 264-seat B767 aircraft. This is double the number of departures that Hawaiian offered last year at this time, when five flights weekly were offered from Sydney using B767 aircraft.

The 18 special flights next spring will add more than 4,700 new air seats to the Australia-Hawai'i travel market.

Hawaiian is launching scheduled service to Brisbane on November 27, with Flight HA 443 departing Honolulu at 10:20 a.m. every Tuesday, Thursday and Saturday, crossing the international dateline, and landing in Brisbane at 4:00 p.m. the following day.

Beginning November 28, the return flight HA 444 will depart Brisbane at 6:35 p.m. every Wednesday, Friday and Sunday, cross the international dateline, and arrive in Honolulu at 8:05 a.m. the same day.

Hawaiian will operate its Honolulu-Brisbane service offering the comfort of its wide-body, twin-aisle Boeing 767-300ER aircraft, seating 264 passengers in a two-class cabin, with 18 in Business Class and 246 in the Main Cabin.

Hawaiian will be the only U.S. carrier flying to Brisbane, capital city of the State of Queensland, which is known as the Sunshine State. Brisbane is centrally located on Australia's east coast and is the gateway to the world-famous Great Barrier Reef, world heritage listed rainforests, the iconic Outback territory, and the renowned leisure destinations of Australia's Gold and Sunshine Coasts.

Brisbane also serves as a key hub for onward travel throughout Australia. Hawaiian has timed its flight schedule so that travelers can connect with same-day flights throughout Queensland and to other states through an interline partnership with domestic carrier Virgin Australia.

Tickets can be purchased online at HawaiianAirlines.com, by calling Hawaiian's reservations department toll-free at 1-800-367-5320, or through any professional travel agent.

Waikiki Parc Hotel Celebrates its 25th Anniversary

Waikiki's chicest address offers exclusive "25 Alive" and "Freak Out" experiences

Waikiki Parc Hotel, Hawaii's chicest address and home of NOBU Waikiki, invites culinary and art loving patrons to celebrate its silver anniversary with its exclusive *25 Alive* experience. Long celebrated for offering travelers exclusive access to Waikiki's cultural landmarks, the property pays tribute to 25 years of being a preferred address for guests and locals alike.

"*25 Alive* rejoices The Parc's way of presenting travelers with a chic, vibrant alternative to luxury with an enriching and alluring world of culture, dining, entertainment, shopping, nightlife and relaxation," said Julie Arigo, general manager of Waikiki Parc. "Our benchmark silver anniversary is an exciting opportunity for guests to explore our 'paradise with an edge.'"

The *25 Alive* promotion exclusive package includes accommodations in an Ocean View Room, Chef's Special dinner for two at the renowned NOBU Waikiki, daily breakfast for two, a welcome amenity gift pack (includes Parc Chic private label wine, the Parc's Endless Summer CD, featuring Grammy Winner Daniel Ho and Herb Ohta Jr., and a Parc Surf note card pack) and complimentary parking. Guests

are also afforded complimentary VIP access to Honolulu's elite art and culture venues at the Bishop Museum and Honolulu Museum of Art by simply presenting their Waikiki Parc Hotel room key card. Package room rates start at USD \$885 for a minimum three night stay, effective from August 20, 2012- - March 31, 2013.

As part of the *25 Alive* promotion, Waikiki Parc is also participating in October's Honolulu Museum of Art "ARTafterDARK" event called "Freak Out." ARTafterDARK is a monthly art party organized by a dynamic group of young volunteers dedicated to exploring the arts. ARTafterDARK is held on the last Friday of the month, January through October, from 6 to 9pm on the grounds of the Honolulu Museum of Art. Waikiki Parc's booth will feature Parc Chic designer wines and Nobu Waikiki appetizers; proceeds will benefit the Honolulu Museum of Art.

For kama'aina residents only, Waikiki Parc is offering a *Freak Out* package that includes accommodations in a Deluxe Mountain Room, daily full American breakfast for two, a welcome Parc Chic wine amenity, complimentary parking, and guaranteed early check in at noon/ guaranteed late check out at 4 p.m. Guests are also afforded complimentary VIP access to Honolulu's elite art and culture venues at the Bishop Museum and Honolulu Museum of Art by simply presenting their Waikiki Parc Hotel room key card. Room rates are USD \$195 per night, from October 26, December 22, 2012. Additional persons at USD \$80, to a maximum of four guests.

Waikiki Parc appeals to guests with an active lifestyle who enjoy exploring the Honolulu area by foot or by car, with a location that provides guests with the best of both worlds: easy access to the beach, as well as Waikiki's unlimited opportunities for shopping, dining and entertainment. For reservations and information, contact a travel professional or the hotel at 808-921-7272 or visit www.waikikiparc.com. Please also visit www.facebook.com/waikikiparc or www.twitter.com/waikiki_parc.



First-Ever Mid-Pacific Conference on Birth and Primal Health Research to Draw World-Renowned Medical Experts to Hawai'i from Oct. 26-28

More than 700 participants from around the world are expected to attend the first-ever [Mid-Pacific Conference on Birth and Primal Health Research](#) from Oct. 26-28, 2012, at the Hawai'i Convention Center. The meeting, which was preceded in February 2010 by the Mid-Atlantic Conference on Birth and Primal Health Research in the Canary Islands, is being held in the Pacific for the first time. It will feature a lineup of the world's foremost authorities on prenatal advancements and childbirth, and draw participation from nearly 40 different professions.

In more than 25 workshops and 40 poster presentations, medical experts from more than three-dozen countries will discuss recent scientific and technical advances that are expected to influence the future of childbirth. Major themes include the impact of microorganisms and antibiotic exposure on fetal development, as well as the impact of synthetic oxytocin use and cesarean sections during childbirth. The meeting is expected to generate more than \$2.6 million in state revenue.



Experts will include Elisabeth Bik from Stanford University's School of Medicine, who is researching newborn bacterial colonization during and after birth; professor, renowned surgeon and author Michael Stark from Berlin, who helped create a new simplified technique of caesarean section; and Dr. Mario Meriardi, coordinator for maternal and perinatal health at the World Health Organization, who will discuss implementing global thinking at a local level.

The Mid-Pacific Conference on Birth and Primal Health Research is organized by the London-based [Primal Health Research Center](#). Registration is available online at www.wombecology.com, including \$99 one-day passes.

Hakone Restaurant's Sushi Buffet

Due to popular demand, Hakone Restaurant at the Hawaii Prince Hotel Waikiki and Golf Club has extended its famous Sushi Buffet to Wednesdays and Thursdays weekly. The Sushi Buffet is now available weekly on Wednesdays, Thursdays, Fridays, Saturdays and Sundays starting at 5:30 pm to 9 pm (Wed/Thurs) and 9:30 pm (Fri/Sat/Sun).

Enjoy authentic Japanese cuisine at Hakone Restaurant featuring Beef Shabu Shabu and Tempura, Chef Shiyoyama's weekly specials, a wide variety of sushi and sashimi and a dessert station. Cost is \$53/per person and \$26.50/per child ages 6-10.



For reservations and more information, call 808.949.4494.

Also, for Seniors 50-years or older (valid identification required), Hakone is offering a special rate on its Sushi Buffet on Wednesdays and Thursdays for \$43/person.

The Senior special is valid until November 15, 2012 and cannot be combined with any other promotion or discount.

Hawaiian to Increase Capacity to Manila

Hawaiian Airlines is adding seat and cargo-carrying capacity to its Manila service to accommodate increased demand during the upcoming holidays and winter season with the introduction of its largest and newest aircraft, the Airbus A330-200, to the route.

The transition from the 264-seat Boeing 767-300ER aircraft to the 294-seat A330 will take effect from this Sunday, November 4, 2012, through March 31, 2013, and add more than 2,500 new air seats to the route during the peak travel period. The A330 aircraft will also increase Hawaiian's cargo capacity on the route by 25 percent.

This will mark the first time Hawaiian has operated A330 aircraft on the Manila-Honolulu route. Peter Ingram, Hawaiian's executive vice president and chief commercial officer, commented, "Our larger A330s give us the flexibility to meet increased travel demand for Hawai'i, and we think our Manila customers will enjoy the comforts of our new aircraft."



Along with having more seats available to make their travel plans, Manila travelers will enjoy the new features and amenities offered by Hawaiian's wide-body, twin-aisle A330 aircraft. The new aircraft are popular with Hawaiian's customers for their comfortable new interior, increased legroom, and state-of-the-art, on-demand entertainment system in every seat.

With high-resolution LCD touch-screen monitors in each seatback, the entertainment system lets customers choose from a wide range of movies, TV programs, music, and video games, while also offering a USB port for the use of their own personal media players. Customers sitting in Business Class will also enjoy iPod compatibility.

Hawaiian has been providing nonstop service, four times weekly, between Manila and Honolulu since April 14, 2008, and is the only U.S. carrier offering nonstop service on the route.

Beginning November 4, Hawaiian's Flight HA 455 will depart Honolulu at 2:05 p.m. on Sunday, Monday, Wednesday, and Friday, cross the international dateline, and arrive in Manila at 6:55 p.m. the following day.

Beginning November 5, the return Flight HA 456 will depart Manila at 8:50 p.m. on Monday, Tuesday, Thursday, and Saturday, cross the international dateline, and arrive in Honolulu at 1:05 p.m. the same day.

Tickets can be purchased online at HawaiianAirlines.com, by calling Hawaiian's reservations department toll-free at 1-800-367-5320, or through any professional travel agent

Hawaiian Diacritical Marks

Waikikī Improvement Association recognizes the use of diacritical marks (i.e., glottal stop (ʻ), macron (ā) in place names of Hawai'i, such as Waikikī and Kalākua Avenue and will include them whenever possible. We also respect the individual use (or not) of these markings for names of organizations and businesses.

There will also be times when we may not have a chance to add or change the markings in all of the articles submitted and when that happens, e kala mai.

Royal Hawaiian Center welcomes performers for the Holidays

This holiday season between November 22 and December 25, Royal Hawaiian Center will offer local community groups the opportunity to be showcased in The Royal Grove, one of the largest open green venues in the heart of Waikiki. Offering more than great shopping, dining, entertainment and Hawaiian programming, the Center proudly welcomes guest performances from school bands, church groups, choirs and other performing arts ensembles.

Community performances are generally scheduled between 1:00 and 4:00 p.m. in The Royal Grove. The Center can assist by providing a full sound system, audio engineer, chairs and a dressing room. Performances usually last between 30-45 minutes.

“We welcome quality local talent from *keiki* to *kupuna* to help fill the Center and Kalakaua Avenue with holiday cheer,” said Manu Boyd, cultural director of Royal Hawaiian Center. “We encourage your school or community ensemble to join us in celebrating the performing arts.”

For information on Royal Hawaiian Center, visit our new website at www.RoyalHawaiianCenter.com or call Lei ‘Olu Guest Services at (808) 922-2299. Follow Royal Hawaiian Center on Twitter @RoyalHawnCtr or “Like” us on Facebook at www.Facebook.com/RoyalHawaiianCenter.

PARKING: Royal Hawaiian Center has the largest parking garage in the heart of Waikiki with 10 levels of parking and more than 600 stalls. The entrance is located up a parking ramp as you enter the Center on the right side of Royal Hawaiian Avenue. The Center’s validated parking promotion offers 1 hour free parking with validation and \$1 per hour for the next 3 hours for a maximum of 4 hours. After 4 hours, standard parking rates apply of \$6 per hour. Special event parking validation rates are available at \$5.

Matthew Pickett named GM of Aqua Lotus Honolulu

Aqua Hotels & Resorts® (www.aquaresorts.com) is pleased to announce Matthew Pickett was appointed General Manager for the boutique Aqua Lotus Honolulu.

With over 16 years of experience in Hawaii’s hospitality industry, including Five Diamond service and a great record of improving revenue maximization and operational efficiency,

Pickett recently guided the 51-room Aqua Lotus Honolulu through a successful \$2.5 million room renovation and upgrade. His knowledge and experience in food and beverage is also great asset as the hotel will launch an exciting new full-service restaurant in 2013.

A member of the Aqua ohana since 2010 where he was Resort Manager, then General Manager, for the oceanfront 350-room Kauai Beach Resort, Pickett previously spent five years with Halekulani and Waikiki Parc Hotels where he most recently was Food and Beverage Manager. He also held management positions at Hawaii Convention Center, Hilton Hawaiian Village Resort & Spa, Outrigger Hotels & Resorts and Grand Wailea Resort & Spa.



Pickett has a B.S. in Hotel, Restaurant and Travel Administration from the University of Massachusetts – Amherst.

Hawaiian Ranks Highest for Service to Hawai'i in Business, Leisure Travel Consumer Awards of *Condé Nast Traveler*

In two current consumer-based travel awards reported by *Condé Nast Traveler*, Hawaiian Airlines ranks as the top domestic carrier flying to Hawai'i for the quality of its service to both business and leisure travelers.

Condé Nast Traveler's 15th Annual Business Travel Awards ranks Hawaiian as second overall among domestic carriers in the category of premium class service, with the results published in this month's magazine. In addition, *Condé Nast Traveler's 25th Annual Readers' Choice Awards* ranks Hawaiian third overall in the category of U.S. carriers. The results are being published in the magazine's November edition.

"These results reflect travelers' experiences with us, so it's especially rewarding to know that people recognize the care and commitment we put into our service," said Peter Ingram, Hawaiian's executive vice president and chief commercial officer. "At the same time, we are continually working to improve the quality of our service and make our flights even more enjoyable."

Hawaiian's winning brand of service is distinguished from that of any other carrier in the world, being linked inextricably to the tradition of welcome and endearing attributes of Hawai'i. Travelers on all of Hawaiian's flights between the U.S. mainland and Hawai'i enjoy the airline's

'*Mea Ho'okipa*' (translation: I am host) inflight hospitality program. Hawaiian's signature onboard service features island-style complimentary meals, made-in-Hawai'i snacks, and improved service offerings to go along with its distinctive showcase of the islands' culture, people and *Aloha Spirit* during the flight.

Adding to the enjoyment of Hawaiian's flight experience is the fact that it is the only carrier to offer the comfort and roominess of wide-body, twin-aisle aircraft for all of its transpacific flights, using its fleet of Airbus A330-200 and Boeing 767-300 aircraft.

Condé Nast Traveler's award results were tabulated from more than 46,000 completed surveys submitted by the magazine's readers earlier this year with their ratings of airlines, hotels, cruises, and other elements of travel.

Survey respondents evaluated airlines in five separate categories – Ticketing and Ground Services, Cabin Comfort, Service, Entertainment, and Food and Beverages – rating each one as excellent, very good, good, fair, or poor. Airline rankings were determined based on the overall percentage of respondents rating them as either excellent or very good.

Honolulu Zoo Society offers twilight tours



What's Wild in Waikīkī? Take a stroll to the Honolulu Zoo and learn the sort of monkey business that goes on after hours. Learn about the lives of the Zoo's remarkable citizens.

Tours are held from 5:30 to 7:30 p.m. every Friday and Saturday evening! It's a fun evening of education never experienced by day visitors.

Special arrangements can be made for large groups. Families are welcome. The tours are appropriate for all ages 5 to 105! Please purchase tickets in advance from the Honolulu Zoo Society (HZS) by calling 971-7195.

Walk-ups are welcome if space is available - meet at the Front Entrance at 5:15pm.

See www.honzoosoc.org for info.

Street activity in / near Waikīkī (courtesy of the City)

November 11, 2012 Sunday
7:00AM Starts
9:30AM Ends

HAWAII SENIOR OLYMPICS 10K RUN sponsored by Hawaii Senior Olympics. The event is expected to have 125 runners. It will start at Queen Kapiolani Park, to Kalakaua Ave., Diamond Hd. Rd., to Paikau St., to 22nd Ave., to Kilauea Ave., to Elepaio St., to Kahala Ave., to Diamond Hd. Rd., to end at Queen Kapiolani Park.

Contact: Joan Davis 535-9070, Fax: 537-9070

E-mail: jrdva4vp@hotmail.com

Waikīkī Hula Show at the Kūhiō Beach Hula Mound

Kūhiō Beach Hula Show – November 2012

Show time is **6:00**

Authentic Hawaiian music and hula shows by Hawai'i's finest *hālau hula* (dance troupes) and Hawaiian performers.

Opens with torch lighting and traditional blowing of conch shell. Tues-Thurs-Sat-Sun, weather-permitting. 6:30-7:30 p.m. (6:00-7:00 p.m. Nov-Dec-Jan) at the Kūhiō Beach Hula Mound, diagonally across from Hyatt Regency Waikiki Beach hotel at Uluniu & Kalākaua Ave.

Outdoors, casual, seating on the grass; beach chairs, mats, etc. okay. Cameras welcome. Presented by Hyatt Regency Waikiki Beach, Hawaii Tourism Authority, City & County of Honolulu and Waikīkī Improvement Association.

For information, call 843-8002.

Week-nights

Every Tuesday – Ainsley Halemanu and Hula Halau Ka Liko O Ka Palai

Every Thursday – Joan "Aunty Pudgie" Young and Puamelia

Week-ends

Sat Nov 3 – Shirley Recca and Halau Hula O Namakahulali

Sun Nov 4 – Kapi'olani Ha'o and Halau Ke Kia'i A O Hula

Sat Nov 10 – Coline Aiu and Halau Hula O Maiki

Sun Nov 11 – Sallie Yoza and Halau O Napuala'ikauika'iu



WAIKĪKĪ IMPROVEMENT ASSOCIATION

2250 Kalākaua Avenue, Suite 405-2, Honolulu, HI 96815

Waikīkī Wikiwiki Wire is published weekly by Sandi Yara Communications for WIA

If you would like to share your news with other members, please send your info to:

editor@waikikiimprovement.com

Weekly Events & Promotions

November 4-10, 2012



Sunday, 11/4

HOLIDAY INN WAIKIKI
BEACHCOMBER RESORT:
OHANA WAIKIKI EAST:

>8-10p Jimmy Buffett's: Randy Allen (info. 791-1200)

****November Promotions****

~Chuck's Cellar: Stump! Trivia Quiz, Every Wednesday {Except Holiday's} (info. 923-4488)

OUTRIGGER REEF:

>6-9p Kani Ka Pila Grill: Brother Noland (info. 924-4990)

****November Promotions****

~Serenity Spa Hawaii: "Step inside and say Ahhhh. \$15 off Hawaiian Lomi Lomi Massage (call for info. 926-2882)

OUTRIGGER WAIKIKI:

>4-6p Duke's: HENRY KAPONO / 9:30p-12a LIVE Local Entertainment (info. 922-2268)

>4p Hula Grill: Aloha Hour / 7-9p LIVE Local Entertainment (info. 923-4852)

****November Promotions****

~Hula Grill: Early Riser Breakfast Special (info. 926-5533)

WAIKIKI BEACH WALK:

>Giovanni Pastrami: Live Satellite SPORTS (info. 923-2100)

****November Promotions****

~Cheeseburger Beachwalk: Breakfast Special (info. 924-5034)

~Sushi 2GO: Daily Lunch Specials (Info. 924-0555)

Monday, 11/5

OUTRIGGER REEF:

>4p Kuloko Arts of Hawaii: FREE Mini Art Lessons~Acrylic Paint (info. 922-5110)

>6-9p Kani Ka Pila Grill: Sean Naauao (info. 924-4990)

OUTRIGGER WAIKIKI:

>4-6p Duke's: Haumea Warrington / 9:30p-12a Ellsworth Simeona (info. 922-2268)

>4p Hula Grill: Aloha Hour / 7-9p LIVE Local Entertainment (info. 923-4852)

Tuesday, 11/6

HOLIDAY INN WAIKIKI
BEACHCOMBER RESORT:
OUTRIGGER REEF:

>Jimmy Buffett's: 9a-5p Surfing Museum Tours

>9 & 9:30a Martin & MacArthur: Create Hawaiian Feather Flowers (info. 447-2797)

>11a Kuloko Arts of Hawaii: FREE Mini Art Lessons~Water Color (info. 922-5110)

>6-9p Kani Ka Pila Grill: Side Order (info. 924-4990)

OUTRIGGER WAIKIKI:

>4-6p Duke's: Haumea Warrington / 9:30p-12a Ellsworth Simeona (info. 922-2268)

>4p Hula Grill: Aloha Hour / 7-9p LIVE Local Entertainment (info. 923-4852)

WAIKIKI BEACH WALK:

>4:30-6p "Ku Ha'aheo"~ Evening Hula, Fountain Stage (info. 931-3591)



Wednesday, 11/7

OUTRIGGER REEF:

>6-9p Kani Ka Pila Grill: Cyril Pahinui (info. 924-4990)

OUTRIGGER WAIKIKI:

>4-6p Duke's: Haumea Warrington / 9:30p-12a Ellsworth Simeona (info. 922-2268)

>4p Hula Grill: Aloha Hour / 7-9p LIVE Local Entertainment (info. 923-4852)

WAIKIKI BEACH WALK:

>4-4:45p "Yoga"~ Fountain Stage (Sign up at the Shiatsu & Massage Center, Waikiki Beach Walk, 2nd floor, Suite 209, Phone # 922-0171.)

Thursday, 11/8

HOLIDAY INN WAIKIKI
BEACHCOMBER RESORT:
OUTRIGGER REEF:

>7-9p Jimmy Buffett's: Thirsty Thursdays! Surf Music (info. 791-1200)

>6-9p Kani Ka Pila Grill: Kawika Kahiapo (info. 924-4990)

OUTRIGGER WAIKIKI:

>4-6p Duke's: Haumea Warrington / 9:30p-12a Ellsworth Simeona (info. 922-2268)

>3p Strolling Hawaiian music & hula, Upper & Lower lobby

>4p Hula Grill: Aloha Hour / 7-9p LIVE Local Entertainment (info. 923-4852)

Friday, 11/9

HOLIDAY INN WAIKIKI
BEACHCOMBER RESORT:
OUTRIGGER REEF:

>9a-5p Jimmy Buffett's: Free Surfing Museum Tours (info. 791-1200)

>9:30p Tevana Trio

>6:30-8:30p Kuloko Arts of Hawaii: Shoji Ledward (info. 922-5110)

>6-9p Kani Ka Pila Grill: Kaukahi (info. 924-4990)

OUTRIGGER WAIKIKI:

>4-6p Duke's: Maunatua / 9:30p-12a LIVE Local Entertainment (info. 922-2268)

>4p Hula Grill: Aloha Hour / 7-9p LIVE Local Entertainment (info. 923-4852)

Saturday, 11/10

HOLIDAY INN WAIKIKI
BEACHCOMBER RESORT:
OUTRIGGER REEF:

>9:30p-11:30p Jimmy Buffett's: Tevana Trio (info. 791-1200)

>6-9p Kani Ka Pila Grill: Manoa Madness (info. 924-4990)

OUTRIGGER WAIKIKI:

>4-6p Duke's: LIVE Local Entertainment / 9:30p-12a LIVE Local Entertainment (info. 922-2268)

>3:30p Hula Grill: Aloha Hour / 7-9p LIVE Local Entertainment (info. 923-4852)

WAIKIKI BEACH WALK:

>Giovanni Pastrami: Live Satellite SPORTS (info. 923-2100)



Activities are subject to change or cancellation without notice ~ weather permitting



DFS EVENT CALENDAR | NOVEMBER 1 - 30, 2012

DFS GALLERIA WAIKIKI <BEAUTY WORLD ON LEVEL 2>



Beauty After Dark

You are invited! Enjoy champagne and DJ music while you receive a complimentary makeover and a photo keep sake.

November 3, 10, 17, 24 / 8 pm – 10 pm



Beauty Concierge

Book an appointment in our exclusive Beauty Concierge and enjoy a menu of complimentary services including our Visia Skin Imaging Machine.

By appointment only.

931-2595, beauty_hi@dfs.com



Fragrance Bottle Painting

Meet our local artist Frank Dumlaog. Purchase any two fragrances and have one bottle hand painted by Frank.

**November 14 & 28
7 pm – 10 pm**

Complimentary makeup applications and skincare consultations at all cosmetics counters, all day!

<FOOD HALL ON LEVEL 1>

Little Chef

Children will enjoy fun chocolate decorating. Complimentary for children under 13 yrs old, every Sunday in the Food Hall.

November 4, 11, 18, 25 / 6 pm – 8 pm



DFS HONOLULU INTERNATIONAL AIRPORT



2 Minutes to Beauty

Visit DFS Beauty at the Honolulu Airport and you can select a hydrating facial, soothing eye treatment, hand massage or quick makeup tips. In 2 minutes, the DFS Beauty team will also provide you with beauty tips and expertise that may last a lifetime.


Monday through Friday / 9 am – 12 pm

DFS Galleria Waikiki

DFS Galleria Waikiki's 3rd floor offers international travelers an exclusive duty-free shopping experience at premier luxury boutiques. The 1st and 2nd floors feature no tax added savings for everyone, including Hawaii residents, on a wide variety of merchandise.

Corner of Kalakaua and Royal Hawaiian Avenues | Open Daily 9 am - 11 pm | 808.931.2700 | www.dfsgalleria.com

*All events subject to change or cancellation.

SUNDAY	MONDAY	TUESDAY	WEDNESDAY	THURSDAY	FRIDAY	SATURDAY
 NOVEMBER 2012				<p>1 Polynesian Cultural Center 11 - 1145a</p> <p>Royal Hawaiian Band 1 - 2p</p> <p>Pu'uohonua 6 - 7p</p>	<p>2 Kala'i Stern & Friends 6 - 7p</p>	<p>3 Polynesian Cultural Center 11 - 1145a</p> <p>Hula Kahiko 6 - 630p</p> <p>Nakeleawe 730 - 830p</p>
4	5	6	7	8	9	10
		Keo'ahu 6 - 7p	Kawika Trask & Friends 6 - 7p	Polynesian Cultural Center 11 - 1145a	Ku'uiipo Kumukahi & the Hawaiian Music Hall of Fame Serenaders 6 - 730p	Polynesian Cultural Center 11 - 1145a
11	12	13	14	15	16	17
		Nanea 6 - 7p	Kawika Trask & Friends 6 - 7p	Polynesian Cultural Center 11 - 1145a	Ku'uiipo Kumukahi & the Hawaiian Music Hall of Fame Serenaders 6 - 730p	Polynesian Cultural Center 11 - 1145a
18	19	20	21	22	23	24
		Keo'ahu 6 - 7p	Kawika Trask & Friends 6 - 7p	THANKSGIVING	Ku'uiipo Kumukahi & the Hawaiian Music Hall of Fame Serenaders 6 - 730p	Polynesian Cultural Center 11 - 1145a
25	26	27	28	29	30	
		Nanea 6 - 7p	Kawika Trask & Friends 6 - 7p	Polynesian Cultural Center 11 - 1145a	Ku'uiipo Kumukahi & the Hawaiian Music Hall of Fame Serenaders 6 - 730p	Polynesian Cultural Center 11 - 1145a
				Pu'uohonua 6 - 7p		Hula Kahiko 6 - 630p
						Maunaloa 730 - 830p
						Mailani Makainai 730 - 830p



Nā Mele No Nā Pua “Music for the Generations”

KAMA'AINA CONCERT SERIES

Waikiki Beach Walk® Presents:

Sunday Showcase

**FREE Concert Every 3rd Sunday
of the month - 5:00 pm to 6:00 pm**
**weather permitting*

Plaza Stage at Waikiki Beach Walk

Valet Parking: \$6.00 (up to four hours) at the Embassy Suites®-Waikiki Beach Walk® (201 Beachwalk) and the Wyndham Vacation Ownership-Waikiki Beach Walk (227 Lewers Street), with any same-day purchase from any Waikiki Beach Walk merchant.

For more information, call **808.931.3591**
Monday thru Friday, 8:00 am to 5:00 pm



KAPALA

November 18 – KAPALA

KAPALA is a unique blend of music and good friends who have come together to make their own imprint on today's music scene. The members of KAPALA have backed up or been a part of Hawaii's finest groups and it is from this experience that KAPALA draw's its inspiration. KAPALA combines traditional and contemporary Hawaiian music with ethnic, jazz, rock, country, urban and soul influences, creating a trailblazing style of music that is uniquely infectious, innovative and at the forefront of today's music scene.



OUTRIGGER HOSPITALITY. Always a warm island welcome!

*In the event of inclement weather, this performance may be cancelled

Weekly Events & Promotions

November 11-17, 2012



Sunday, 11/11

- HOLIDAY INN WAIKIKI
BEACHCOMBER RESORT:
OHANA WAIKIKI EAST:** ➤8-10p Jimmy Buffett's: Randy Allen (info. 791-1200)
****November Promotions****
-Chuck's Cellar: Stump! Trivia Quiz, Every Wednesday (Except Holiday's) (info. 923-4488)
- OUTRIGGER REEF:** ➤6-9p Kani Ka Pila Grill: Brother Noland (info. 924-4990)
****November Promotions****
-Serenity Spa Hawaii: *Step inside and say Ahhhh. \$15 off Hawaiian Lomi Lomi Massage (call for info. 926-2882)
- OUTRIGGER WAIKIKI:** ➤4-6p Duke's: HENRY KAPONO / 9:30p-12a LIVE Local Entertainment (info. 922-2268)
➤4p Hula Grill: Aloha Hour / 7-9p LIVE Local Entertainment (info. 923-4852)
****November Promotions****
-Hula Grill: Early Riser Breakfast Special (info. 926-5533)
- WAIKIKI BEACH WALK:** ➤Giovanni Pastrami: Live Satellite SPORTS (info. 923-2100)
****November Promotions****
-Cheeseburger Beachwalk: Breakfast Special (info. 924-5034)
-Sushi 2GO: Daily Lunch Specials (Info. 924-0555)

Monday, 11/12

- Restaurant Week Hawaii 2012** **The Most Delicious Week of the Year - November 12-18**
For more information and a complete list of participating restaurants visit: <http://www.restaurantweekhawaii.com/>
- OUTRIGGER REEF:** ➤4p Kuloko Arts of Hawaii: FREE Mini Art Lessons-Acrylic Paint (info. 922-5110)
➤6-9p Kani Ka Pila Grill: Sean Naauao (info. 924-4990)
- OUTRIGGER WAIKIKI:** ➤4-6p Duke's: Haumea Warrington / 9:30p-12a Ellsworth Simeona (info. 922-2268)
➤4p Hula Grill: Aloha Hour / 7-9p LIVE Local Entertainment (info. 923-4852)

Tuesday, 11/13

- HOLIDAY INN WAIKIKI
BEACHCOMBER RESORT:
OUTRIGGER REEF:** ➤ Jimmy Buffett's: 9a-5p Surfing Museum Tours
➤9 & 9:30a Martin & MacArthur: Create Hawaiian Feather Flowers (info. 447-2797)
➤11a Kuloko Arts of Hawaii: FREE Mini Art Lessons-Water Color (info. 922-5110)
➤6-9p Kani Ka Pila Grill: Weldon Kekauoha (info. 924-4990)
- OUTRIGGER WAIKIKI:** ➤4-6p Duke's: Haumea Warrington / 9:30p-12a Ellsworth Simeona (info. 922-2268)
➤4p Hula Grill: Aloha Hour / 7-9p LIVE Local Entertainment (info. 923-4852)
- WAIKIKI BEACH WALK:** ➤4:30-6p "Ku Ha' aheo"- Evening Hula, Fountain Stage (info. 931-3591)

Wednesday, 11/14

- OUTRIGGER REEF:** ➤6-9p Kani Ka Pila Grill: Cyril Pahinui (info. 924-4990)
- OUTRIGGER WAIKIKI:** ➤4-6p Duke's: Haumea Warrington / 9:30p-12a Ellsworth Simeona (info. 922-2268)
➤4p Hula Grill: Aloha Hour / 7-9p LIVE Local Entertainment (info. 923-4852)
- WAIKIKI BEACH WALK:** ➤4-4:45p "Yoga"- Fountain Stage (Sign up at the Shiatsu & Massage Center, Waikiki Beach Walk, 2nd floor, Suite 209, Phone # 922-0171.)

Thursday, 11/15

- HOLIDAY INN WAIKIKI
BEACHCOMBER RESORT:
OUTRIGGER REEF:** ➤7-9p Jimmy Buffett's: Thirsty Thursdays! Men in Gray Suits (info. 791-1200)
- OUTRIGGER WAIKIKI:** ➤6-9p Kani Ka Pila Grill: Kawika Kahiapo (info. 924-4990)
➤4-6p Duke's: Haumea Warrington / 9:30p-12a Ellsworth Simeona (info. 922-2268)
➤3p Strolling Hawaiian music & hula, Upper & Lower lobby
➤4p Hula Grill: Aloha Hour / 7-9p LIVE Local Entertainment (info. 923-4852)

Friday, 11/16

- HOLIDAY INN WAIKIKI
BEACHCOMBER RESORT:
OUTRIGGER REEF:** ➤9a-5p Jimmy Buffett's: Free Surfing Museum Tours (info. 791-1200)
➤9:30p Kailua Bay Buddies
➤6:30-8:30p Kuloko Arts of Hawaii: Shoji Ledward (info. 922-5110)
➤6-9p Kani Ka Pila Grill: Kaukahi (info. 924-4990)
- OUTRIGGER WAIKIKI:** ➤4-6p Duke's: Maunakua / 9:30p-12a LIVE Local Entertainment (info. 922-2268)
➤4p Hula Grill: Aloha Hour / 7-9p LIVE Local Entertainment (info. 923-4852)

Saturday, 11/17

- HOLIDAY INN WAIKIKI
BEACHCOMBER RESORT:
OUTRIGGER REEF:** ➤9:30p-11:30p Jimmy Buffett's: Kailua Bay Buddies (info. 791-1200)
- OUTRIGGER WAIKIKI:** ➤6-9p Kani Ka Pila Grill: Manoa DNA (info. 924-4990)
➤4-6p Duke's: LIVE Local Entertainment / 9:30p-12a LIVE Local Entertainment (info. 922-2268)
➤3:30p Hula Grill: Aloha Hour / 7-9p LIVE Local Entertainment (info. 923-4852)
- WAIKIKI BEACH WALK:** ➤Giovanni Pastrami: Live Satellite SPORTS (info. 923-2100)

Activities are subject to change or cancellation without notice ~ weather permitting



MANOA DNA—
Award-Winning
Family Band

HENRY KAPONO—
Award-winning
Grammy-Nominated
Singer Songwriter

Heshamfoto.com
AIDAN JAMES—
11 Year Old YouTube
Ukulele Sensation

GREGG HAMMER—
Comedian, Emcee

The Best Holiday Party Ever.

**11:00am Holiday Luncheon Celebration
Friday, December 14, 2012**

Hilton Hawaiian Village® is throwing the biggest holiday party in town!
Make it your office, group or organization's holiday celebration and enjoy a
delicious holiday buffet lunch, prizes and big name entertainment including
Henry Kapono, Manoa DNA, Aidan James and Gregg Hammer.

All of this for only \$55/person (and you don't have to clean up afterward).

RSVP no later than December 9, 2012.

**Reserve the Best Table Now.
947-7955**

For more information, including the special holiday lunch buffet menu, visit:

HiltonHawaiianVillage.com/party

Stay & Play
Ask about our special
kama'aina package rates:
949-4321


Hilton
HAWAIIAN VILLAGE®
WAIKIKI BEACH RESORT





Christmas in Hawaii Includes a Very Important Outrigger Guest

Santa Claus makes two special appearances this holiday season at the Outrigger Waikiki and Outrigger Reef hotels

One of the holiday season's most recognized figures, Santa Claus, is scheduled to make a return visit to the [Outrigger Waikiki on the Beach](#) and [Outrigger Reef on the Beach](#) hotels this December with two popular Christmas in Hawaii events that are open to the public.

Santa Claus will spread holiday cheer on the beach at Waikiki when he arrives by outrigger canoe at the Outrigger Waikiki on December 8; and on December 18 and 19, kids can enjoy breakfast with Santa Claus at the Outrigger Reef's Kani Ka Pila Grille.



Hawaiian Santa Arrives by Outrigger Canoe

December 8 – Saturday, 9 am,
[Outrigger Waikiki on the Beach](#)

Welcome Santa Claus as he arrives via outrigger canoe on the beach in front of the Outrigger Waikiki hotel. Hundreds are expected on Waikiki Beach as Santa sheds his sleigh for this island mode of transportation powered by Waikiki beach boys. Keiki (children) from Halau 'O Pua Kahale will be on hand to greet Santa Claus with a gift of hula. The arrival will be followed by complimentary photo-taking with Santa in the hotel lobby. Free and open to the public.

Breakfast with Santa Claus

December 18 and 19 – 8 am to 10 am, [Outrigger Reef on the Beach](#)

What child doesn't dream of having just a few precious moments with Santa Claus to whisper in his ear their special holiday wish? Kids can do just that and more at this year's Breakfast with Santa set for two mornings this December at the Outrigger Reef on the Beach. A buffet breakfast, picture taking, balloon art, and face painting are all part of the morning's activities on December 18 and 19; but the highlight certainly will be the time children spend with Santa. \$25.00 per person, inclusive of tax, tip and FREE photo with Santa; \$12.50 children 5 – 11 years; children 4 years and younger eat free. Reservations required: 808-924-4993.



Christmas in Hawaii is always a busy time of year with visitors choosing to escape the cold for the warmth and sunshine of Hawaii, so early reservations are a must. Hotel reservations can be made by contacting your preferred travel agent or call toll free 1-800-OUTRIGGER (1-800-688-7444) within the United States, Guam and Canada. Elsewhere call direct to 303-369-7777 (long distance charges apply). Or, visit www.outrigger.com or e-mail reservations@outrigger.com.